



GSM-based alarm with remote control

CLx20 is a competent alarm system with temp features for houses, summer cottages, boats, caravans, camper vans, company cars, containers, industrial vehicles, etc.

CLx20 V4

The CLx20 is the collective name for the CL520 and the CL220, two of our GSM-based alarm systems. They are easily connected to various sensors and will send text messages and activate a siren when triggered.

The alarm can be controlled from a mobile telephone, with the help of an access list stored in the unit which determines who has authority. The alarm can also be controlled with a key fob or code lock. You can also monitor and adjust the temperature; it has two temperature sensors with completely adjustable alarm limits and texts.

Applications

The CLx20 is perfect for the surveillance of objects that have no land line or alarm system such as cold rooms, freezer rooms, server rooms, houses, summer cottages, boats, caravans, camper vans, company cars, containers, industrial vehicles, etc. The unit combines common alarm functions, such as IR and sirens, etc. with temperature control, surveillance and remote access.

GSM

The CLx20 communicates via the GSM network. The functions are controlled by calling or sending a text message to the mobile number installed in the unit. In normal use, the alarm function is activated and de-activated by calling the unit or using the key fob (accessory). Once the incoming number has been compared with the access list using caller ID, the CLx20 disconnects the call which means that the

function is free (in most countries). All GSM subscription types that support texting and have caller ID can be used. This keeps the subscription costs down.

Inputs

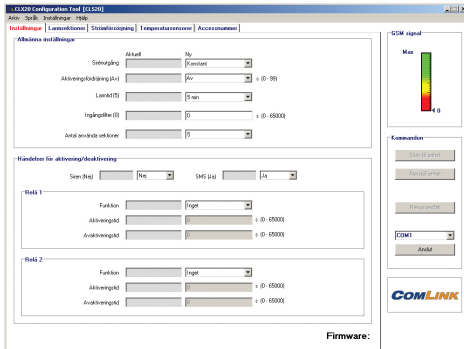
The CL520/CL220 has five/two separate alarm sections. Each section can be individually configured according to the type of sensor (N/O or N/C). Each section can generate up to four individual text messages to four different recipients. This means a triggered alarm can, for example, generate text messages in plain text to users, as well as coded messages to an alarm central (if connected).

Outputs

The CLx20 is equipped with two relay outputs (max. 1A at 24V), which are remotely accessed by way of text messages to the unit. The outputs can also be activated automatically when, for example, a set temperature is exceeded or when an alarm function is activated. Only users on the access list can access the unit's functions, all others are ignored. There is also an output for an external status indication LED.

Temperature sensors

Two digital temperature sensors can be read remotely and trigger an alarm when the set max/min alarm limit is passed. When the value is exceeded, the relay can be thrown automatically, which means that the unit can also function as a thermostat with an adjustable temperature. The settings can be changed remotely by sending a text message to the unit.



Configuration programme
CLx20 Config Tool.

Sensor (accessory)

All sensors currently available on the market with a breaking (N/C) or making (N/O) function can be connected to the CLx20. A 12V power output is available for the sensors.

Siren (accessory)

An external siren can be connected via the existing siren output, and this sounds when the inputs that are not configured for silent alarm are triggered. The CL520 is also equipped with an internal siren (summer).

Battery back-up (accessory)

A connection is available for an external lead battery. The battery is maintenance charged and monitored to ensure a long battery life as well as problem-free operation. If the battery charge drops below 11V, a text message will be sent indicating a low battery charge; ideal for battery surveillance of, for example, a boat or caravan, where you should avoid over draining the battery.

Power supply surveillance

When the battery back-up is connected, an alarm can be sent via text message when the external power supply (230V) is cut, as well as when it returns.

Broad voltage area

The CL 520 can be powered with 12–15 VDC (battery back-up) or 15–30 VAC/DC (power supply).

Configuration

All settings are very easily set with the help of the accompanying Config Tool PC software.

Most settings can also be set by text message.

Technical info

Accompanying accessories:

- Installation & user manual
- 2 temperature sensors
- Dipole GSM antenna
- 230 V mains adaptor
- USB Programming cable
- Jackable screws plinths

Extra Accessories:

- Key fob
- External status indicator (LED)
- External siren
- IR detector
- Magnetic contact
- Gas sensor
- Level monitor
- Tilt sensor
- Optical smoke detector
- and more

Technical data:

- Power supply:
12–15VDC or 15–30VDC/AC
- Power consumption nom:
35mA@12VDC
- Power consumption max:
1A@12VDC
- Temperature range in operation:
–40°C to +85°C
- Inputs:
5 or 2 alarm inputs for N/O or N/C
2 inputs for external
Temperature sensors.
- Outputs:
2 relay outputs, max 24V 1A
1 output for external siren
+12VDC max. 500mA
1 output for external status LED
- Casing:
Robust aluminum casing
- Dimensions:
80x67x41mm