



GSM-based alarm transmitter

The SMS Transceiver V3 kit comes complete with screw terminal block, Power adaptor and antenna. Config Tool kit can be ordered free of charge

SMS Transceiver V3

The GSM based alarm transmitter, SMS Transceiver V3, is able to send SMS messages with alarm texts to mobile phones or emergency centres. Equipment connected to the unit's relay outputs can also be remotely controlled via SMS or a phone call. The unit's broad area of use includes operations monitoring and surveillance.

The SMS Transceiver V3 is designed for high reliability and a simple installation. The unit is easily configured with a free pc programme and controlled with a mobile phone.

Alarm inputs

The unit is equipped with six inputs which generate alarms via SMS, when triggered.

The inputs can be connected to both N/O and N/C sensors as well as a voltage output, 4-28V DC. The inputs are able to generate alarms both when triggered and when returning to their normal state.

The inputs have two different alarm modes: *block time*, to prevent repeated alarms and *activation delay*, to set the time an input needs to be triggered before an alarm is generated.

To attract further attention to a sent alarm, the SMS Transceiver is also able to make a call to

the recipients of the SMS messages.

The alarm texts and recipients are individually configured by the user.

Outputs

The SMS Transceiver V3 has two relay outputs. Connected equipment can be remotely controlled by a free phone call to the unit. An SMS 'receipt' with the relays' current state can be returned to the caller.

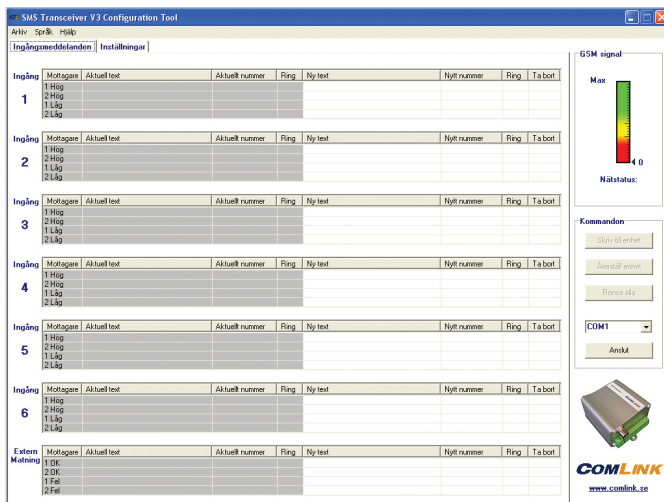
The outputs can also be controlled via SMS. The relays can be activated on a timer or switched on/off.

Access control

An improved access control feature has been implemented in the SMS Transceiver V3, to further promote security.

When the access control is activated, all incoming calls and text messages are checked against an access list. Messages or calls from unauthorised senders are ignored

Up to 238 users can be stored in the access list.



Configuration

The unit is easily configured with the free PC programme, SMS Transceiver V3 Config Tool. The SMS Transceiver is connected to the computer with a serial cable. Alarm texts, recipients and all other necessary settings are made in the programme.

Several settings can also be made remotely, by sending SMS commands to the unit.

Information about the unit's status and configuration can be retrieved by sending an SMS command. A text message is returned, containing information about the status of the unit's inputs and outputs, external power, current configuration etc.

If the access control is active, the incoming SMS command will be checked for authorisation.

Battery back-up

As an option, the SMS Transceiver V3 can be equipped with an internal battery back-up; the unit will run approximately one day on the battery.

With a back-up battery installed, the unit continually monitors the external power supply. An SMS alarm is sent in case of external power failure, as well as when the power returns.

Technical info

Power supply

- Voltage range: 9–28V AC/DC
- Current consumption nom: 30mA@12V DC
- Current consumption max: 1A@12V DC
- Operating temperature: –20 – +55°C

Connections

- Inputs: 6 alarm inputs 4–28V DC
- Outputs: 2 relay outputs maximum 24V, 1A
- Cable area maximum: 1,5mm²
- RS232 for configuration

Size

- L x W x H 67 x 67 x 42mm

Weight

- 140g in aluminium casing

Mounting

- Mount on DIN-rail alternatively with screws

Accessories

- GSM Antenna
- Screw terminal blocks 12+2 pin
- Net adaptor 230V
- User manual

Optional accessories

- Internal battery back-up
- Antenna extension
- Config Tool and cable (free)